

(Fact Sheet Begins Next)

## Act Now to Continue Receiving Information About This Site!

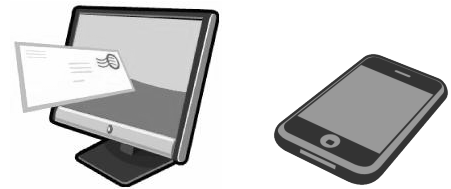
DEC's Division of Environmental Remediation (DER) now distributes information about contaminated sites electronically by email.

If you would like to continue to receive information about the contaminated site featured in this fact sheet:

**You must sign up for the DER email listserv:**

[www.dec.ny.gov/chemical/61092.html](http://www.dec.ny.gov/chemical/61092.html)

DER cannot register your email address - only the email address owner can do so. If you already have signed up for the listserv for the county in which the site is located, you need do nothing.



### Why You Should Go “Paperless”:

- Get site information faster and share it easily;
- Receive information about all sites in a chosen county - read what you want, delete the rest;
- It helps the environment and stretches your tax dollars.

**If “paperless” is not an option for you**, call or write to the DER project manager identified in this fact sheet. Indicate that you need to receive paper copies of fact sheets through the Postal Service. Include the site name in your correspondence. The option to receive paper is available to individuals only. Groups, organizations, businesses, and government entities are assumed to have email access.



Department of  
Environmental  
Conservation

# FACT SHEET

## State Superfund Program

Bay Shore/Brightwater  
Former MGP Site  
Operable Unit 4  
Clinton Avenue  
Bayshore, Suffolk County

SITE No. 152172  
NYSDEC REGION 1

Access project documents through the DECinfo Locator and at these location(s):  
<https://extapps.dec.ny.gov/data/DecDocs/152172/>

April 2024

## Interim Remedial Measure to Begin Public Comment Period Announced

**Bay Shore/Brightwaters Public Library**  
1 South Country Road  
Brightwaters, NY 11718  
(631) 665-4350  
Repository is open during normal library hours

**NYSDEC Region 1 Office**  
Contact: Girish Desai, P.E.  
50 Circle Road  
Stony Brook, New York 11790  
(631) 444-0240

For additional information about site activities and other related information about the site, please visit National Grid's website for the project at:  
[www.bayshoreworksmgp.com](http://www.bayshoreworksmgp.com)

### Who to Contact

Comments and questions are welcome and should be directed as follows:

**Project-Related Questions**  
Matthew Ayers, Project Manager  
NYSDEC  
625 Broadway  
Albany, NY 12233  
(518) 402-6447  
[matthew.ayers@dec.ny.gov](mailto:matthew.ayers@dec.ny.gov)

**Project-Related Health Questions**  
James Sullivan  
NYSDOH  
Empire State Plaza, Corning Tower  
Room 1787  
Albany, NY 12237  
(518) 402-5584  
[James.Sullivan@health.ny.gov](mailto:James.Sullivan@health.ny.gov)

For more information about New York's State Superfund Program, visit:  
<https://dec.ny.gov/environmental-protection/site-cleanup/brownfield-and-state-superfund-programs/state-superfund-sites>

The New York State Department of Environmental Conservation (NYSDEC), in consultation with the New York State Department of Health (NYSDOH), is announcing an expedited cleanup of contamination at the Bay Shore/Brightwaters Former MGP site ("site") at the Operable Unit (OU)-4 (22 Oak Street) portion of the site located between Oak Street and the Long Island Rail Road in Bay Shore, Suffolk County. Operable units OU-1 through OU-3 were previously addressed. Please see the map for the site location. NYSDEC is conducting a public comment period because this Interim Remedial Measure (IRM) is likely to represent a significant part of the cleanup in OU-4. The expedited cleanup activities are expected to begin in May 2024 and last about two months. The activities will be performed by National Grid ("remedial party") with oversight provided by NYSDEC.

**How to Comment:** NYSDEC is accepting written comments about the proposed plan for 30 days, from **April 18** through **May 18, 2024**.

- Access the IRM Work Plan and other project documents online through the DECinfo Locator:
- <https://extapps.dec.ny.gov/data/DecDocs/152172/>.
- Documents also are available at the location identified at left under "Where to Find Information."
- Please submit comments to the NYSDEC project manager listed under Project-Related Questions in the "Who to Contact" area at left.

The site consists of four operable units (OU) 1 through 4 and it is listed as a Class "A" site in the State Registry of Inactive Hazardous Waste Sites (list of State Superfund sites). A Class "A" site represents a site that has undergone remediation but additional remedial work is necessary and the remedial party has agreed to implement such additional work.

# STATE SUPERFUND PROGRAM

**Interim Remedial Measure (IRM) Work Plan:** An IRM is a cleanup activity that may be performed when a source of contamination or exposure pathway (the way in which a person may contact contamination) can be effectively addressed without extensive investigation and evaluation.

The IRM work plan describes cleanup activities that include:

- Excavation and off-site disposal of contaminated soil to approximately 15 feet below surface grade under the existing building at the northern portion of the 22 Oak Street property following building demolition;
- Removal of contaminated “hot spot” areas at depths ranging between 18 and 19 feet below grade at two locations within the limits of the excavation;
- Import of clean material that meets the established soil cleanup objectives for use as backfill; and
- Implementation of a Health and Safety Plan and Community Air Monitoring Plan during all ground intrusive activities.

**Next Steps:** The approved work plan will be made available to the public (see “Where to Find Information” on front page).

Upon completion of the expedited cleanup activities, a Construction Completion Report will be prepared that documents the activities that were performed.

NYSDEC will keep the public informed throughout the investigation and cleanup of the site.

**Site Description:** The site is mostly level and approximately 10 acres in size with four operable units OU-1 through OU-4. The operable units straddle the Long Island Railroad (LIRR) tracks near the Bay Shore station, between Fifth Avenue on the north end and Johnson Lane on the south end, and the line between the incorporated village of Brightwaters and the adjacent, unincorporated land in Bay Shore in the Town of Islip, Long Island. The original manufactured gas plant (MGP) buildings are gone, and the site is currently over half vacant. National Grid owns a building housing maintenance staff on the western portion of the property, and a groundwater treatment building constructed east of Clinton Avenue and south of the LIRR. OU-4 currently consists mainly of a commercial building and parking areas for the LIRR. The LIRR parking area was previously remediated in 2011. Currently, the building is going to be demolished by the property owner which will accommodate the removal of impacted soil that was under the building and will enable the redevelopment of the site. Surrounding land use is mixed residential and commercial. Most of the neighboring

properties are commercial, but a few residential lots border the site to the north and across Union Boulevard to the southeast.

The redevelopment of the OU-4 portion of the site is planned for mixed use consisting of commercial and residential uses.

Additional site details, including environmental and health assessment summaries, are available on NYSDEC's Environmental Site Remediation Database (by entering the site ID, 152172) at:

<https://extapps.dec.ny.gov/cfm/extapps/derexternal/index.cfm?pageid=3>

**Summary of the Investigation:** The primary contaminants of concern at the site are MGP-related polycyclic aromatic hydrocarbon (PAH) compounds including benzo(a)anthracene, benzo(b)fluoranthene, benzo(a)pyrene and chrysene, which are present in soil and groundwater at the northern portion of the property.

**State Superfund Program:** New York's State Superfund Program (SSF) identifies and characterizes suspected inactive hazardous waste disposal sites. Sites that pose a significant threat to public health and/or the environment go through a process of investigation, evaluation, cleanup and monitoring. NYSDEC attempts to identify parties responsible for site contamination and require cleanup before committing State funds.

For more information about the SSF, visit:

<https://dec.ny.gov/environmental-protection/site-cleanup/brownfield-and-state-superfund-programs/state-superfund-sites>

*We encourage you to share this fact sheet with neighbors and tenants, and/or post this fact sheet in a prominent area of your building for others to see.*

## Stay Informed With DEC Delivers

Sign up to receive site updates by email:

<https://dec.ny.gov/environmental-protection/site-cleanup/regional-remediation-project-information/environmental-cleanup-email-newsletters>

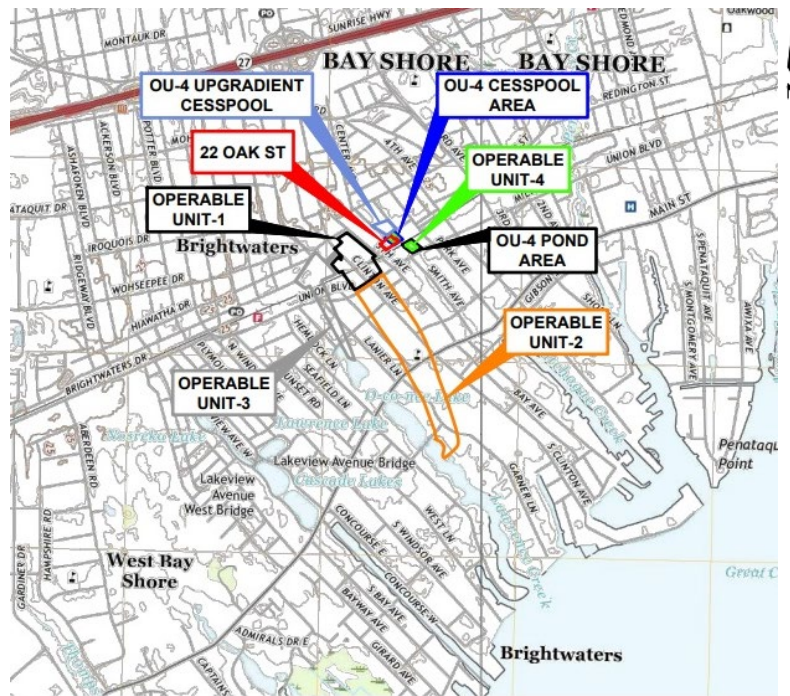
Note: Please disregard if you already have signed up and received this fact sheet electronically.

## DECinfo Locator

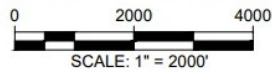
Interactive map to access DEC documents and public data about the environmental quality of specific sites: <https://dec.ny.gov/maps/interactive-maps/decinfo-locator>



# STATE SUPERFUND PROGRAM



**RCE:**  
S TOPOGRAPHIC MAP, 7.5-MINUTE SERIES: BAY SHORE EAST, NY RANGLE (2019) AND BAY SHORE WEST, NY QUADRANGLE (2019). ACCESSED IE NATIONAL GEOLOGIC MAP DATABASE (<https://ngmdb.usgs.gov/topoview/>).



MAP SHOWING OPERABLE UNITS OU-1 THROUGH OU-4

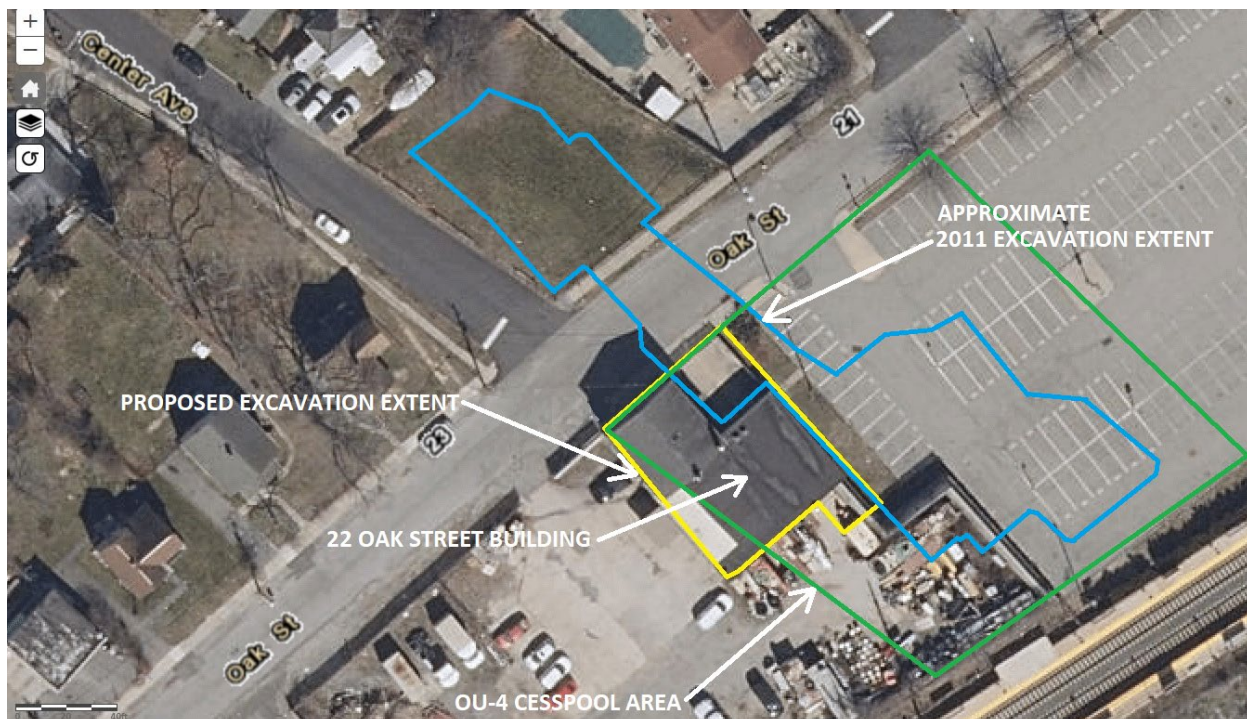


FIGURE SHOWING THE EXCAVATION EXTENT (YELLOW LINE) AT OPERABLE UNIT OU-4



## Translation Available. Don't see your language? Ask!

<b>English</b>	To have this document translated into a language you can understand, contact the person below. There is no charge for the translation.
<b>Español Spanish</b>	Si necesita la traducción de este documento a un idioma que pueda entender, comuníquese con la persona indicada abajo. La traducción es gratis.
<b>简体字 Simplified Chinese</b>	如需將此文件翻譯成您能理解的語言版本，請聯絡下方人員。本次翻譯不收取費用。
<b>Русский Russian</b>	Чтобы получить перевод этого документа на понятный вам язык, свяжитесь с представителем, данные которого указаны ниже. Плата за эту услугу не взимается.
<b>אידיש Yiddish</b>	צו האבן די דאקומענט איבערגעטייטשט אין א שפראך וואס איר קענט פארשטיין, פארבינדט זיך מיט די פערזאן אונטן. די איבערטייטשונג איז פריי פון אפצאל.
<b>বাঙালি Bengali</b>	এই নথিটি আপনি বুঝতে পারেন এমন একটি ভাষায় অনুবাদ করতে, নিম্নলিখিত ব্যক্তির সাথে যোগাযোগ করুন। অনুবাদের জন্য কোন চার্জ দিতে হবে না।
<b>한국어 Korean</b>	이 언어를 본인이 이해할 수 있는 언어로 받아보려면 아래 담당자에게 문의하십시오. 번역료는 없습니다.
<b>Kreyòl Ayisyen Haitian Creole</b>	Pou yo ka tradwi dokiman sa nan yon lang ou ka konprann, kontakte moun ki anba a. Ou p'ap peye anyen pou tradiksyon an.
<b>Italiano Italian</b>	Per ottenere la traduzione di questo documento in un'altra lingua, contatti la persona indicata qui di seguito. La traduzione è gratuita.
<b>العربية Arabic</b>	لترجمة هذا المستند إلى لغة يمكنك فهمها، تواصل مع الشخص أدناه. لا يتم تطبيق رسوم مقابل الترجمة.
<b>Języki Polski Polish</b>	Aby uzyskać tłumaczenie tego dokumentu na język, który jest dla Ciebie zrozumiały, skontaktuj się z poniższą osobą. Za tłumaczenie nie jest pobierana żadna opłata.

**Contact: Matthew Ayers, (518) 402-6447, and [matthew.ayers@dec.ny.gov](mailto:matthew.ayers@dec.ny.gov)**